



presents:

OCTAX ICSI Guard™

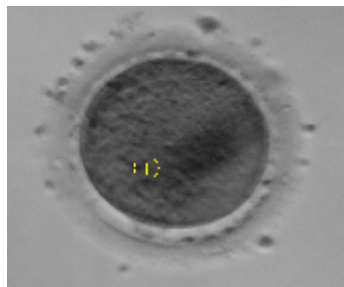
the integrated system for real-time spindle imaging

The spindle mediates proper alignment of the chromosomes and their equal distribution to the daughter cells during meiotic divisions. Spindle integrity and regular function are indispensable prerequisites for normal embryonic development. Seamlessly integrating into your daily lab routine, OCTAX ICSI Guard™ facilitates spindle imaging within minimal times.

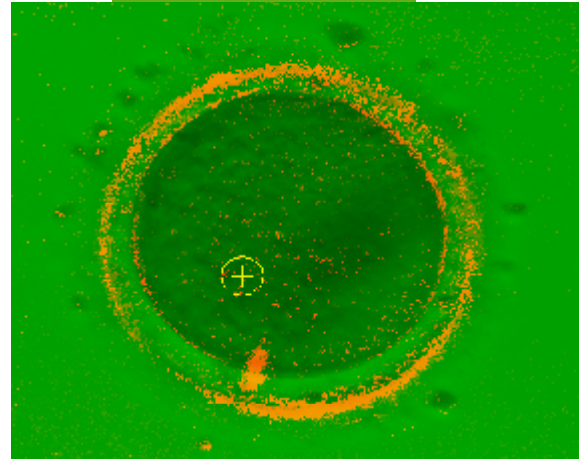
System Components:

- Circular polarizer and GIF filter
- Liquid crystal analysis slider
- High resolution OCTAX USB 2.0 digital camera
- OCTAX ICSI Guard™ software

Left: ICSI Guard™ bright field image of an oocyte, polar body located at 7 o'clock, looking like metaphase II.

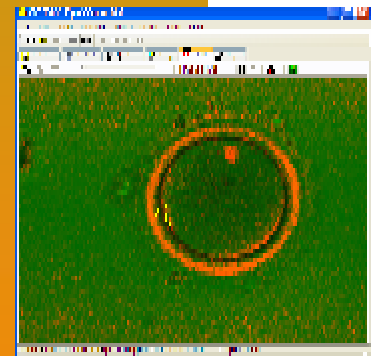
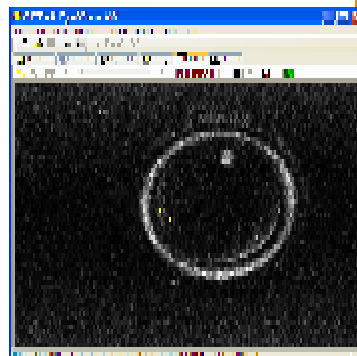
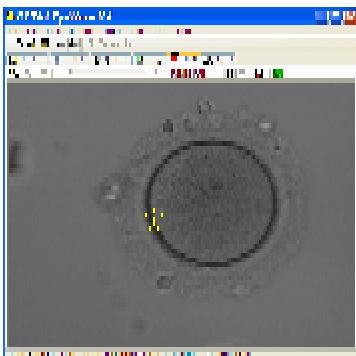


Right: ICSI Guard™ active, same oocyte, spindle fibers are still connecting oocyte cytoplasm and polar body; the actual stage is telophase I.



Main features:

- Orientation-independent live imaging of the meiotic spindle
- Self-calibrating, no active calibration required
- Spindle imaging under normal bright field light intensity
- Full OCTAX Laser Shot™ and Fertilase^R compatibility, i.e. one camera and one software for laser control, spindle visualization and image processing
- Support of all OCTAX EyeWare™ features (image acquisition and archival, video and time lapse video recording, biometric measurements etc.)
- One button instant on/off function for convenient working



Metaphase II oocyte, ICSI Guard™ in bright field, polarization and combined mode; a fragmented polar body is situated at 6 o'clock, the spindle at the opposite pole of the oocyte.

Main applications:

- Improve your ICSI results by performing spindle oriented instead of polar body oriented microinjection
- Evaluate oocyte maturity after in vitro maturation, in low responder patients or before polar body biopsy and optimize the timing of ICSI / polar body biopsy
- Assess oocyte developmental potential by analyzing the birefringence of the inner zona layer
- Quality control: the spindle is extremely sensitive towards temperature and pH changes and will immediately indicate suboptimal culture conditions

Ordering information: MTG Medical Technology Vertriebs-GmbH, Opalstrasse 32, 84032 Altdorf, Germany
 Phone +49 (0) 871 975 19-0, Fax +49 (0) 871 975 19-70, mail@mtg-de.com
 OCTAX ICSI Guard™ is currently not available in the U.S.A.